

Flanged Pinch Valve

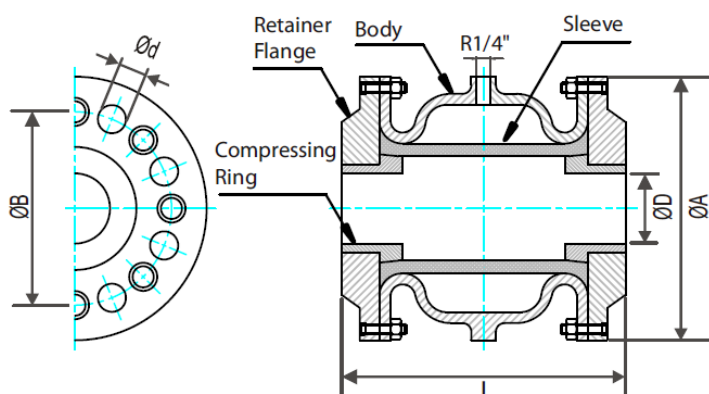
Pneumatic pinch valves are widely used in mining industries in high mechanical abrasive applications, slurries and other industrial applications.

Main application areas:

Mining, Metallurgy, chemical, water treatment and other general industrial applications.

In order to ensure 100% tightness, pipe line pressure must be min. Δp 1,5-2,0 bar lower than air supply pressure. Maximum consistent temperature is 80°C

Part name	Material
Body	Aluminum
Flange	Aluminum
Sleeve	Natural rubber
Bolt	AISI316



Dimensions (mm)

DN	ØD	L	ØA	ØB	Ød	n
40	40	155	150	110	18	4
50	60	166	165	125	18	4
65	60	183	185	145	18	4
80	75	220	200	160	18	8
100	100	280	220	180	18	8
125	120	348	250	210	18	8
150	145	418	285	240	22	8
200	190	555	340	295	22	8
250	250	610	390	350	22	12