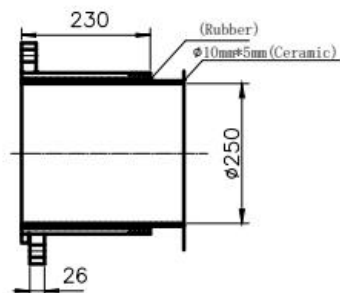
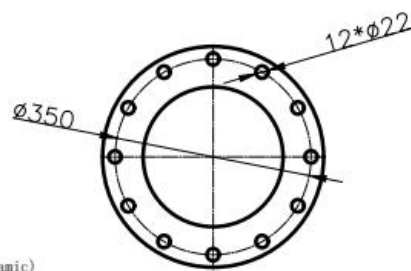
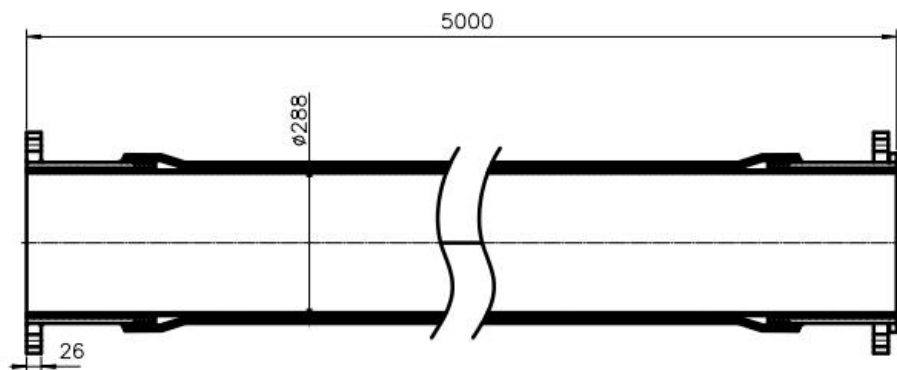


**Godstransportslang med keramiskt foder**

En mycket tålig slang med ett slitstarkt keramiskt invändigt foder.

Tillverkas i dimensioner från DN25 upp till DN300 och kan levereras i längder upp till 20 m. Monterade flänsar eller kopplingar enligt önskemål. Tål temperaturer upp till 120°C.



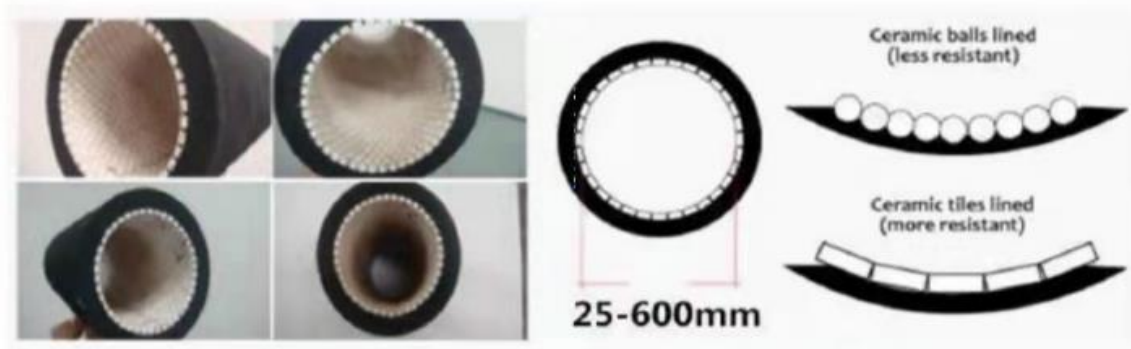
Montageexempel DN250



The flexible Wear resistant ceramic hoses are known as an unique and high quality product in the world. The advanced technology has been applied for a patent and accepted the patent number 210008 and SGS QIP-ASI1241515

### 1. Lining:

The EPDM rubber hose with ceramic lining(92% Alumina) inside, the ability of resisting abrasion is more available and efficient.



In the newly developed ceramic hose, ceramic tips are used to eliminate a disadvantage in a conventional ceramic hoses. It has higher abrasion resistance while maintaining flexibility.

### 2. Reinforcement:

For large size ceramic hose usually, a steel wire will be embedded in helix structure on Polyester Fabric to reinforce the working pressure.

### 3. Cover:

Wear resistant synthetic rubber –Black EPDM rubber



#### 4. Product advantage:

It is widely used in thermal power plants, cement plants, ore dressing plant, chemical corrosion resistance, coal powder and the slurry delivery system, and also used for port and river dredging suction sand, concrete pump vehicle and so on.

##### Wear resistance

The wear resistance of SHP-CR ceramic rubber hose is 10 times higher than that of ordinary steel pipe, and is 20 times more than that of common hose;

##### Corrosion resistance

Ceramic and high quality anti - corrosive rubber can resist all the harsh conditions;

Running resistance is small

Lining ceramic uniform, dense, smooth, can reduce the pressure loss. to prevent the formation of eddy current;

##### Impact resistance

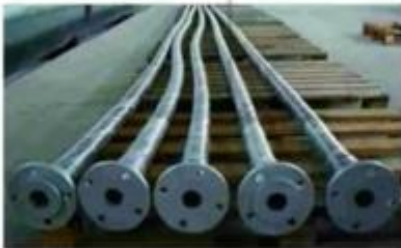
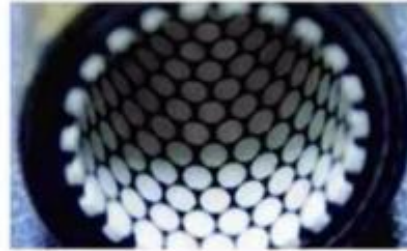
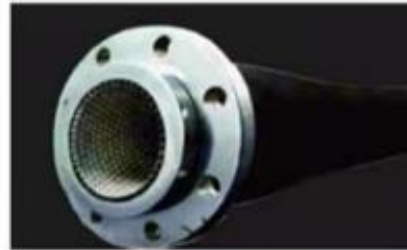
The impact on ceramics force moment by rubber buffer and absorption, so SHP-CR wear-resistant ceramic rubber hose for larger particles impact;

##### Light weight

Weight is only 30% of steel pipes;

##### Flexible

The design of the cylindrical ceramic inside the rubber and the precise arrangement make the pipe with good flexibility, large angle bending will not have any effect on the ceramic; Convenient and quick installation Provide with connections of fixed flange, active flange, screw, or quick connector.



#### 5. Main technology data:

**Rubber material:** EPDM (Ethylene-Propylene-Diene Monomer)

**Color:** Black

**Reinforcement:** One high tensile steel wire braid  
High-tensile wire spiral  
Steel wire  
Textile braided tensile synthetic yarn  
High tensile textile cords

**Performance:** Heat-resistant rubber hose  
Rubber hose for sand and grit blasting  
Acid alkali resistant rubber hose

**Ceramic:** 92% alumina

**Density:** 3.7g/cm<sup>3</sup>

**Ceramic size:**  $\varnothing$ 7mm\*3mm (1 1/2 inch -4 inch inner diameter)  
 $\varnothing$ 10mm\*3mm (5 inch -10inch inner diameter)



## 6. Temperature range:

-20 °C~120 °C

## 7. Usage:

The ceramic hose is mainly used for transporting the industrial waste and some material, such as dry or wet cement, slurry, coal powder, fuel by-waste material, minerals, something with sharp-angled, liquid or solid, etc.

## 8. Application Fields:

The ceramic hoses are widely used in steel plants, cement plants, power plants, refuse disposal plants, coal mine, mining industries, glassworks, sand blast, concrete pump truck, dredging, desilting, etc.



## 9. Pictures:



## 10. Regular Size:

Description	Inner Diameter	Temperature	Pressure	Max Length
Ceramic hose	1" (25mm)	-20 °C ~120 °C	>10Kg	20m
Ceramic hose	1 1/4"(32mm)	-20 °C ~120 °C	>10Kg	20m
Ceramic hose	1 1/2"(38mm)	-20 °C ~120 °C	>10Kg	20m
Ceramic hose	2"(50mm)	-20 °C ~120 °C	>10Kg	20m
Ceramic hose	2 1/2"(65mm)	-20 °C ~120 °C	>10Kg	20m
Ceramic hose	3"(75mm)	-20 °C ~120 °C	>10Kg	20m
Ceramic hose	3 1/5"(80mm)	-20 °C ~120 °C	>10Kg	20m
Ceramic hose	3 1/2"(90mm)	-20 °C ~120 °C	>10Kg	10m
Ceramic hose	4"(100mm)	-20 °C ~120 °C	>10Kg	10m
Ceramic hose	5"(125mm)	-20 °C ~120 °C	>10Kg	10m
Ceramic hose	6"(150mm)	-20 °C ~120 °C	>10Kg	10m
Ceramic hose	8"(200mm)	-20 °C ~120 °C	>10Kg	10m
Ceramic hose	10"(250mm)	-20 °C ~120 °C	>10Kg	10m
Ceramic hose	12"(300mm)	-20 °C ~120 °C	>10Kg	10m
Ceramic hose	20" (500mm)	-20 °C ~120 °C	>10Kg	10m